

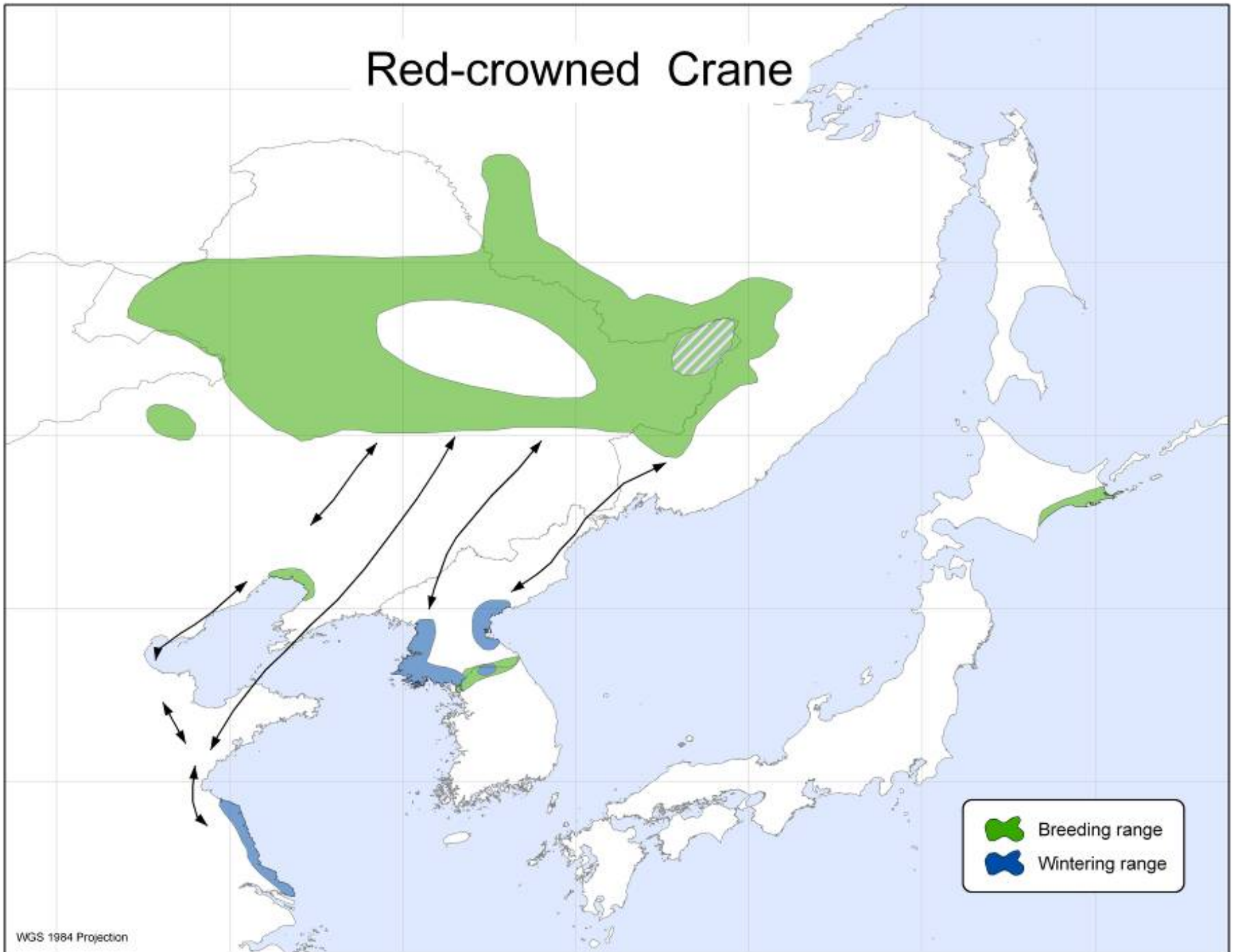








Red-crowned Crane

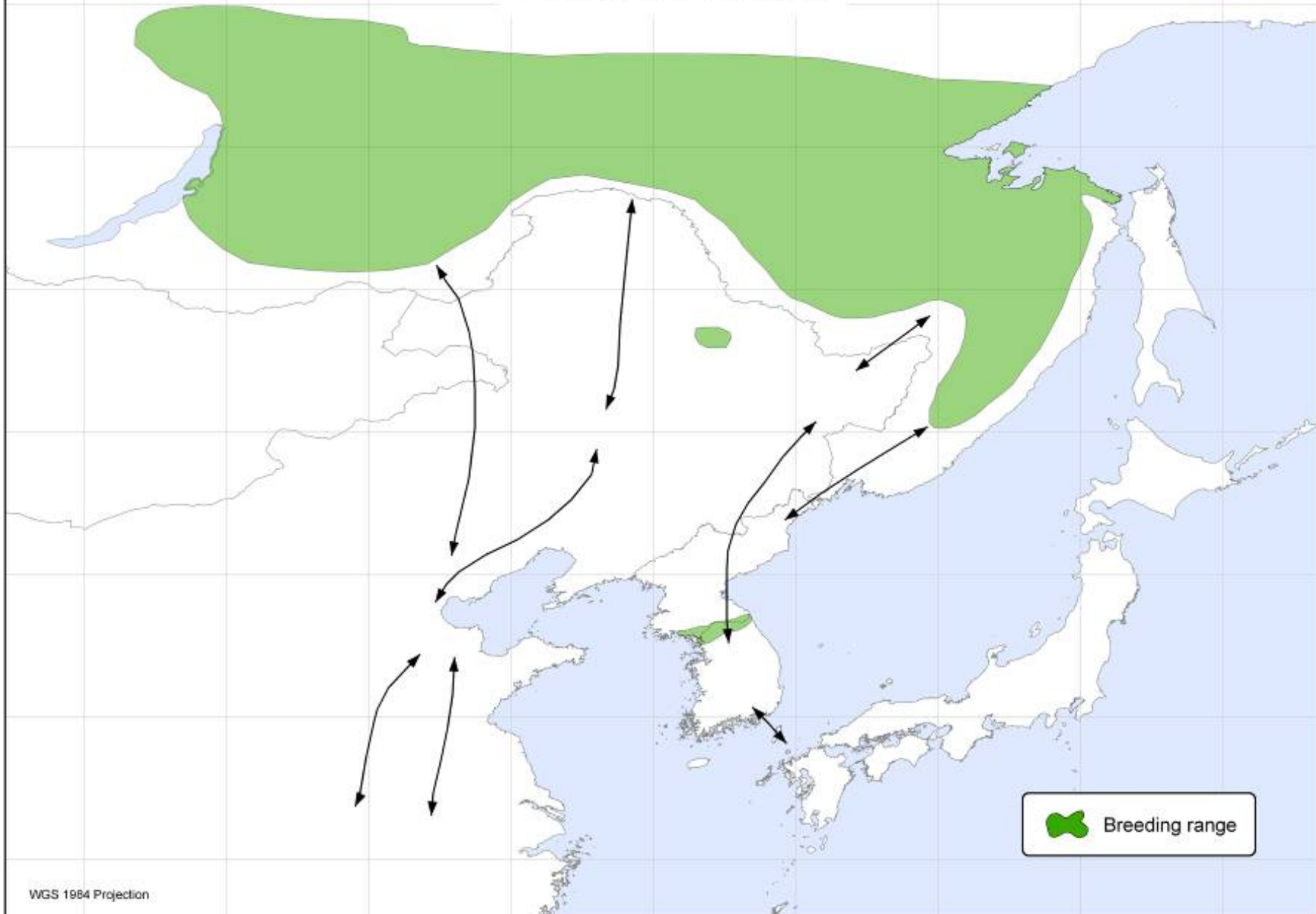




Hooded Crane



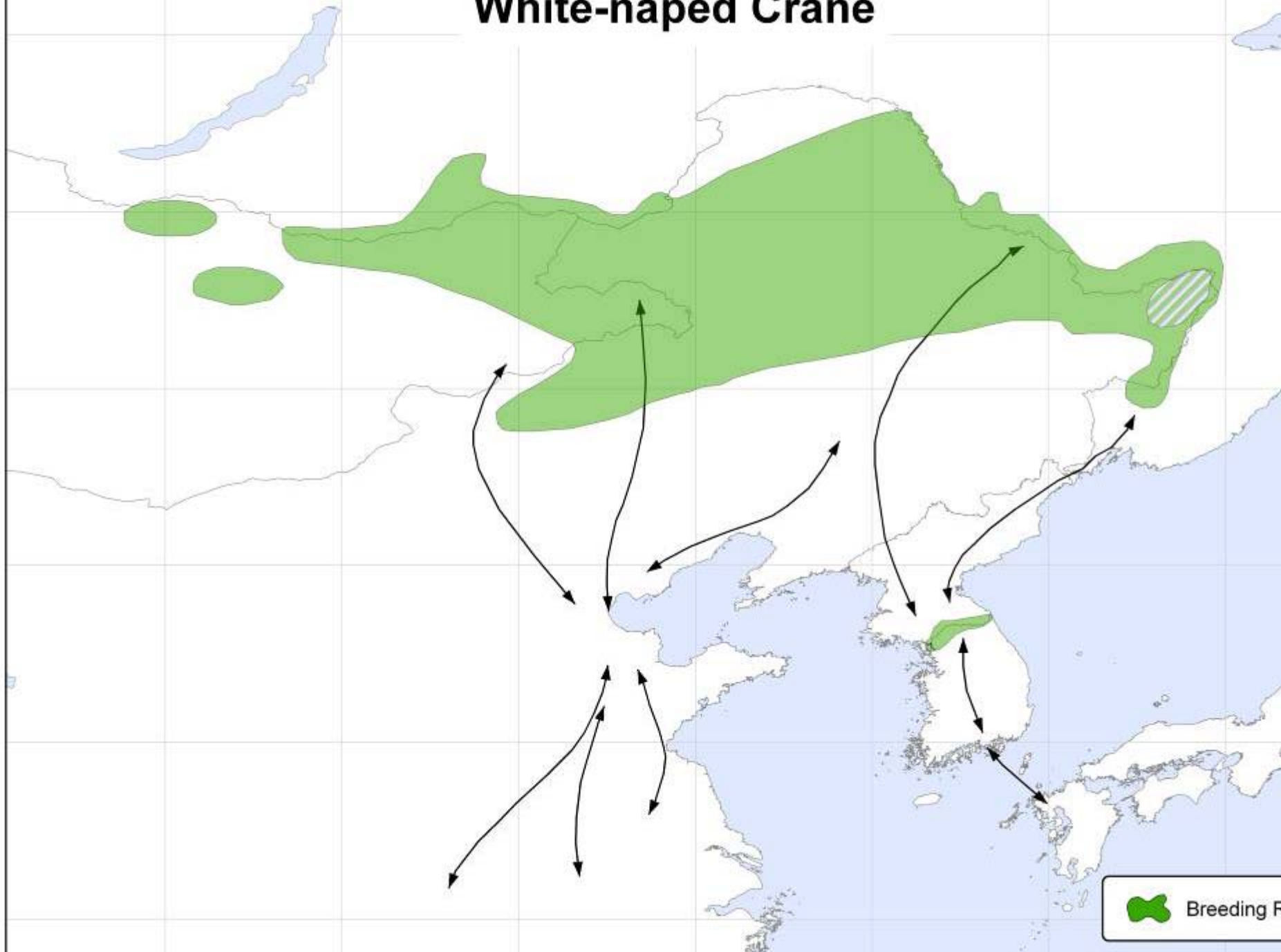
Hooded Crane



 Breeding range



White-naped Crane



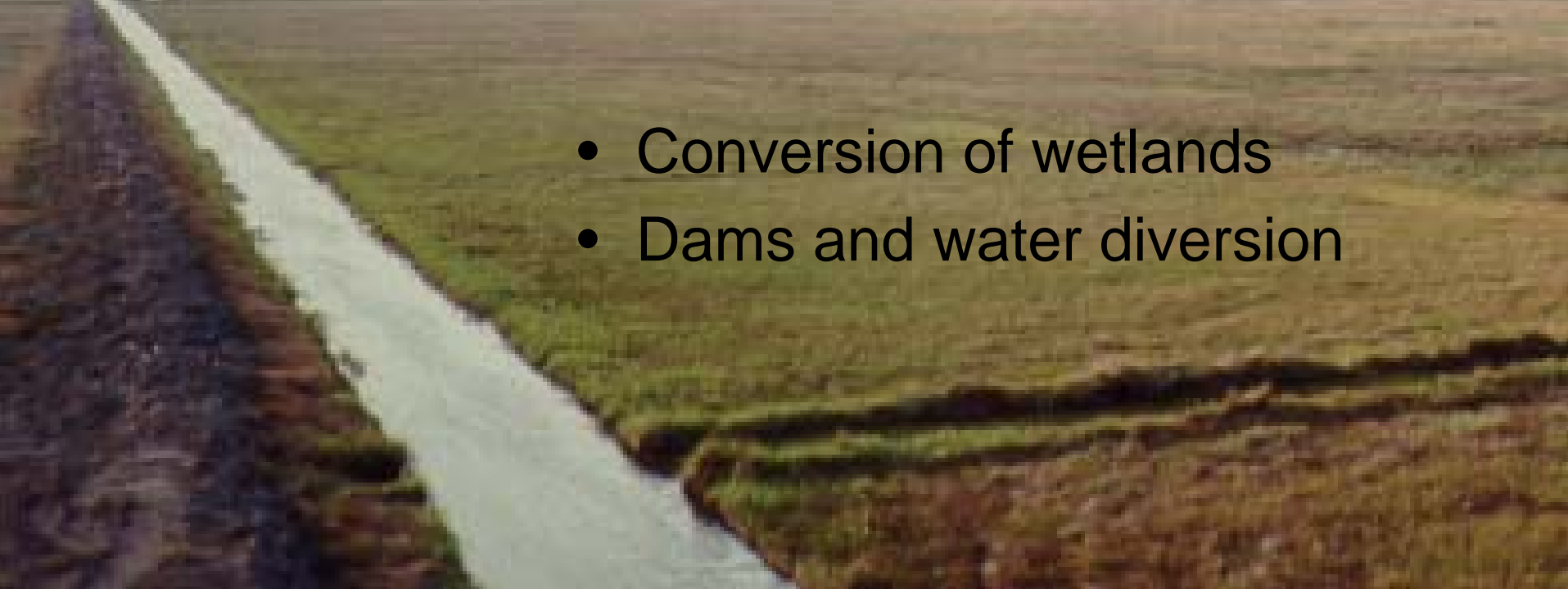


Although illegal, some farmers still poison cranes for supposed crop damage. Here, two Crowned Cranes lie dead at the edge of a maize field.

Alhoewel onwettig, vergiftig sommige boere nog steeds kraanvoëls vir sogenaamde oesskade. Hier lê twee dooie Mahems langs 'n mielieland

Excessive harvest





- Conversion of wetlands
- Dams and water diversion

- Changes in Ag practices
- Urban expansion and development
- Over-exploitation of resources

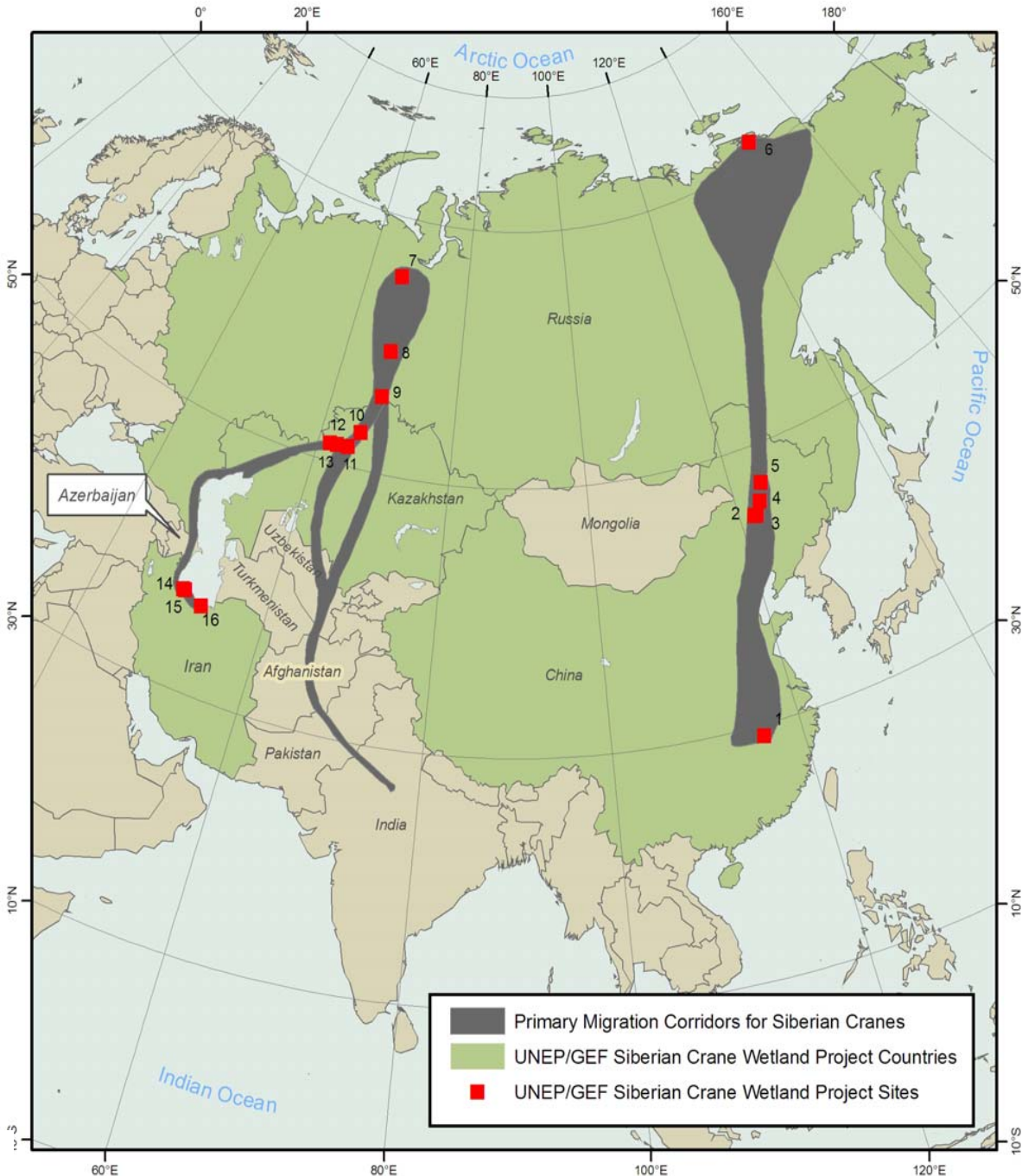


China Crane Flyway Project

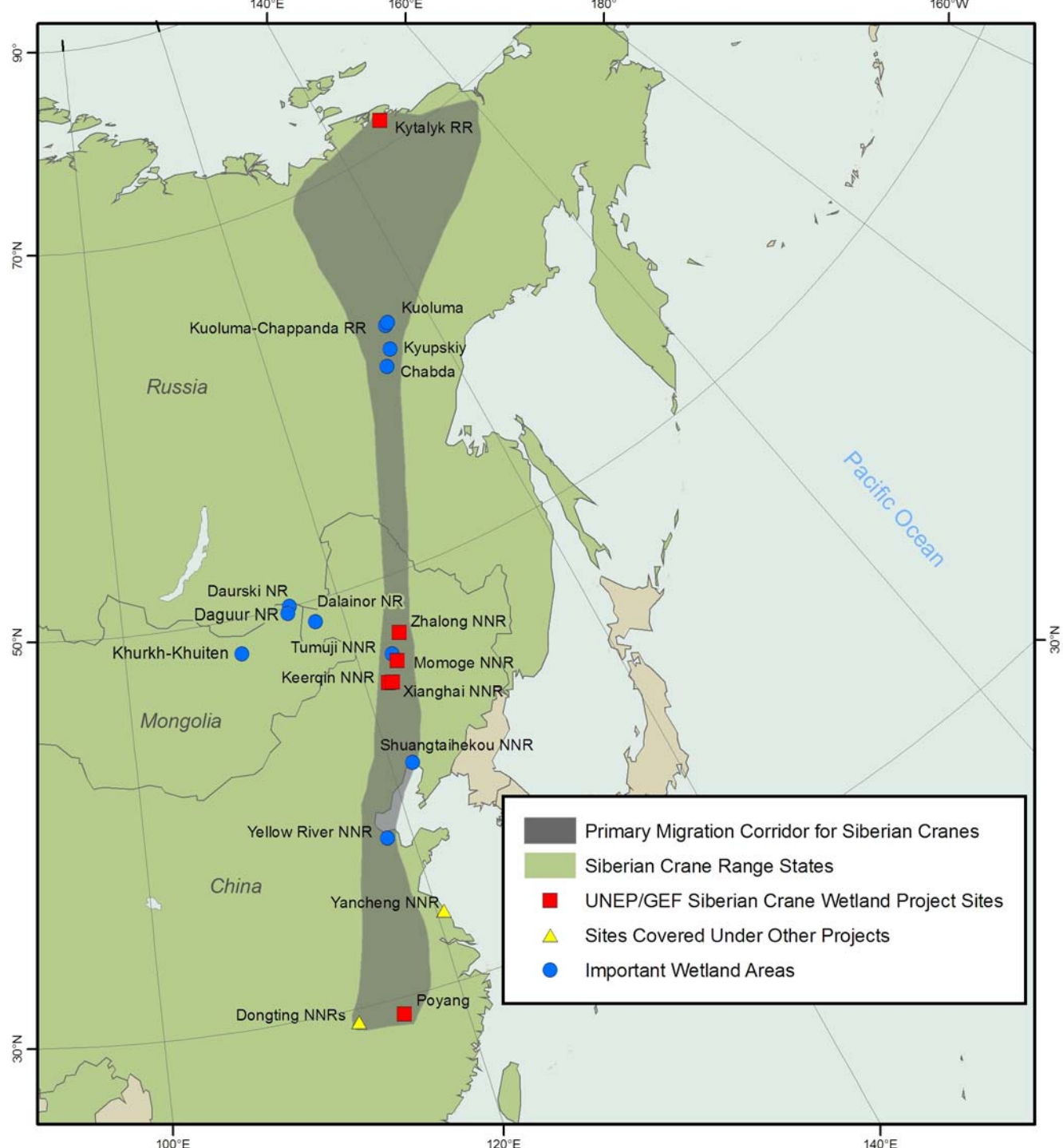




- GEF/UNEP Siberian Crane Wetlands Project
- Site Level
16 key wetlands
Four countries
- National level
Strengthen policy
Increase international cooperation
- International level
Coordinate wetland networks along the flyway



Map by the International Crane Foundation 2005
Cartographer: Zoe Rickenbach



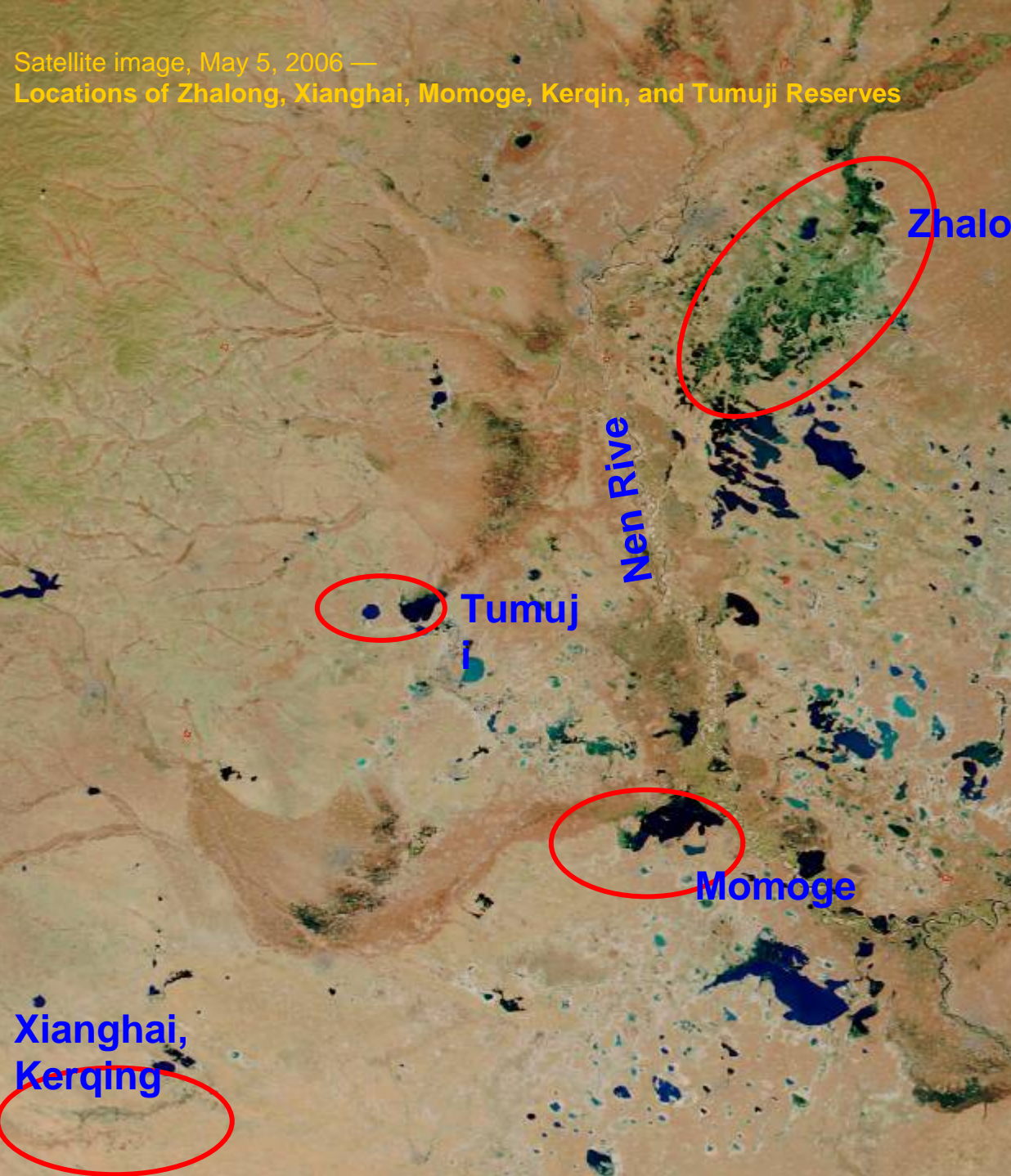




The water in wetlands varies dramatically month to month and year to year. Waterbirds may respond by moving among different wetlands.



Satellite image, May 5, 2006 —
Locations of Zhalong, Xianghai, Momoge, Kerqin, and Tumuji Reserves



Zhalong

Tumuj

Momoge

Xianghai,
Kerqing

Green – wetlands, vegetation
Blue – Lakes, open water

Northeast --addressing water shortage



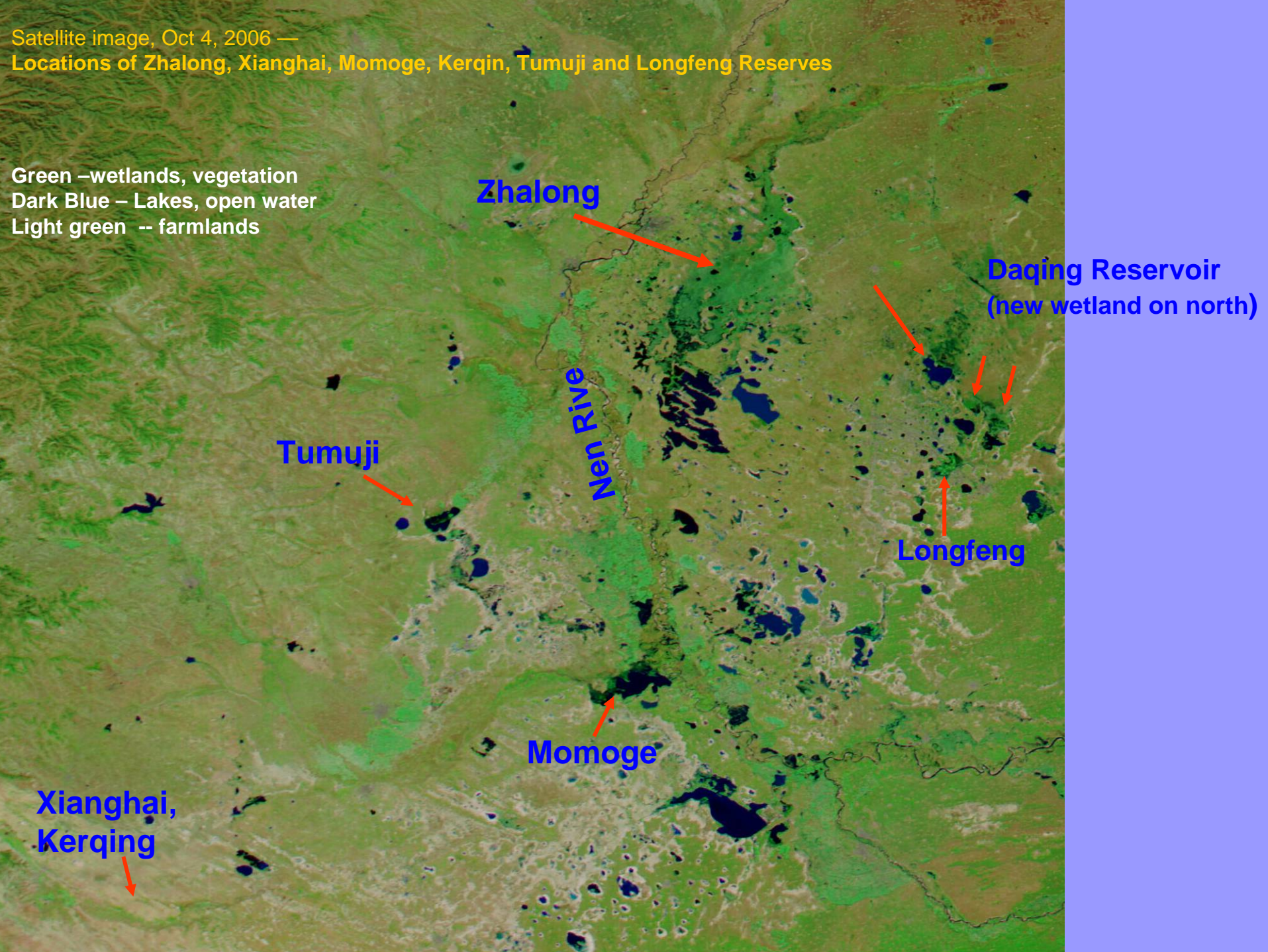


What happens when the same negative factors – prolonged drought and growing human demand for water – threaten all wetlands in a region? Where can the waterbirds go?



Satellite image, Oct 4, 2006 —
Locations of Zhalong, Xianghai, Momoge, Kerqin, Tumuji and Longfeng Reserves

Green –wetlands, vegetation
Dark Blue – Lakes, open water
Light green -- farmlands



Zhalong

Daqing Reservoir
(new wetland on north)

Tumuji

Nen River

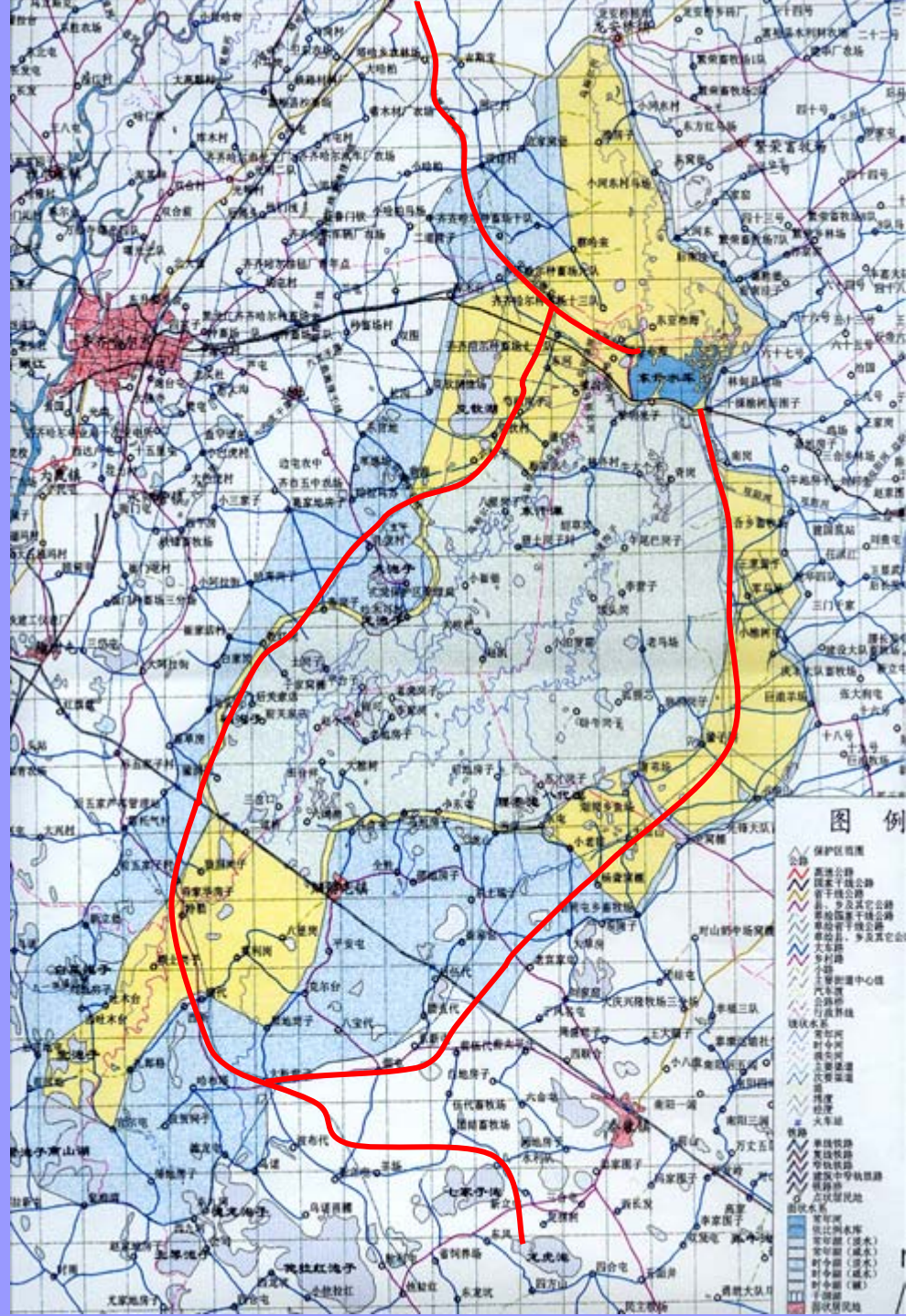
Longfeng

Momoge

Xianghai,
Kerqing













Flyway Monitoring





Special Focus on Tianjin







2006 9



Flyway Education







心悅教學研討會



白鶴遷徙路線圖

ǒu àng

文明守纪 求实创新

鸟
鱼
人

鸟类生存的
基本条件

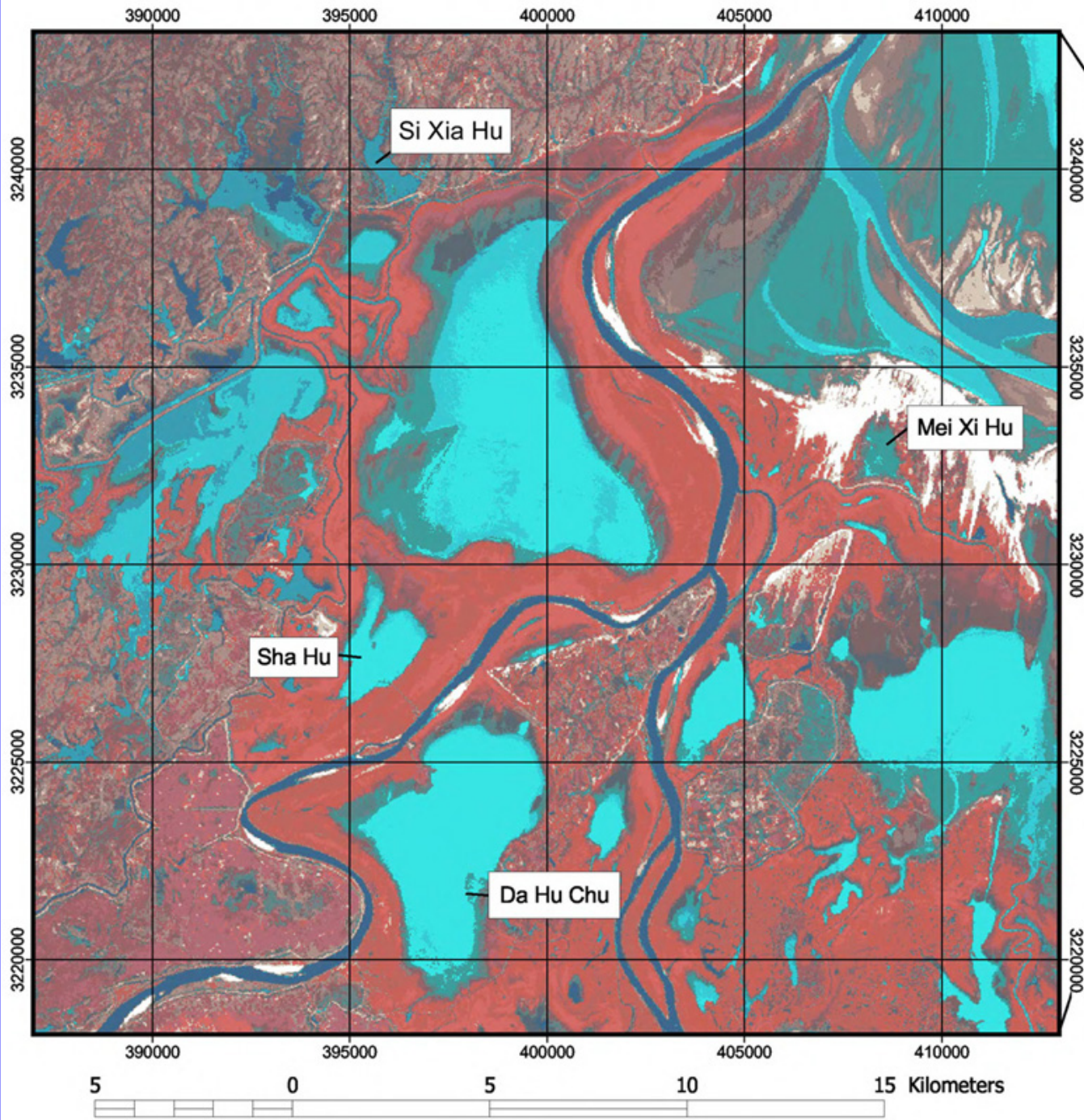
}	栖息环境	—— 缩小
	食物	—— 减少
	水	—— 缺水





Expanding protected areas at Poyang





Poyang Lake Focus Area



January 27, 2000 Satellite Image showing focus lakes for ICF's Poyang lake conservation research. Poyang Lake is the wintering location for 90% of the worlds endangered Siberian Cranes.



When one tugs at a single thing in nature,



**... one finds it attached to the
rest of the world.**

John Muir

